

BRA

941

✓

WATERFRONT
S252
1989

Sasaki Associates, Inc.

Planning

Architecture

Landscaping Architecture

Urban Design

Transportation Planning

Civil Engineering

Environmental Services

Interior Design

Graphic Design

gov. 97-56

For generations people

have created special places.

At Sasaki Associates we

have planned and designed

distinctive environments

for more than 35 years.

In the following pages

we are pleased to present

some of the places we

have created in the past

year: places for people to

learn, to gather, to work,

and to live.

BOSTON PUBLIC LIBRARY



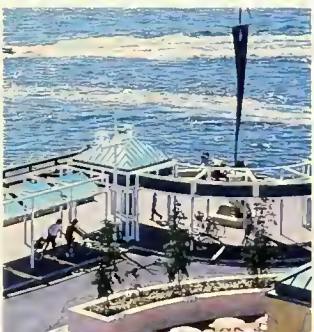


PLACES FOR LEARNING

Sasaki Associates' campus planning and design gives focus to the physical setting for learning. Open space provides the organizing framework to integrate new facilities into the campus fabric. Architectural solutions, while answering complex requirements, respect the culture and tradition of the school.

Edith Stein Hall rests comfortably in the rich mix of architectural styles at the College of the Holy Cross. Collaboration among our architects, landscape architects, and civil engineers has produced an award-winning building that establishes a strong yet appropriate presence on the hillside campus. The 75,000 square foot classroom and office structure is set into the slope of the main campus drive, where a shady pine grove was preserved to mark the principal entrance, via footbridge, into the second-level lobby. A quiet courtyard outside the lower lobby continues the campus quadrangle tradition.





Every city and town benefits from public places where people can gather to celebrate the vitality of their community. The gathering places Sasaki Associates creates foster a special sense of connection between people and their history, their natural surroundings, and their neighbors.

St. Petersburg's Municipal Pier has been totally renovated to present a lively, colorful, welcoming waterfront attraction. Planning, architectural, landscape architectural, and civil engineering services were required to refurbish the 1,800-foot long pier and the public building at the pier head. New pavilions dotting the pier shelter farmers' markets and push-cart retail. A tramway carries passengers to the distinctively shaped, renovated pier structure, which contains shops and restaurants. An exterior glass elevator takes visitors to an open-air observation deck overlooking the city and Tampa Bay.

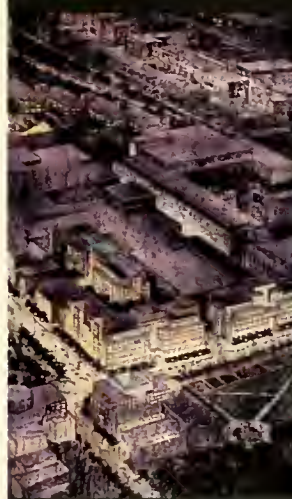
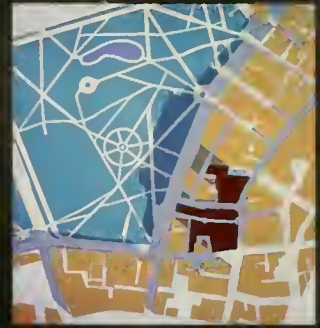
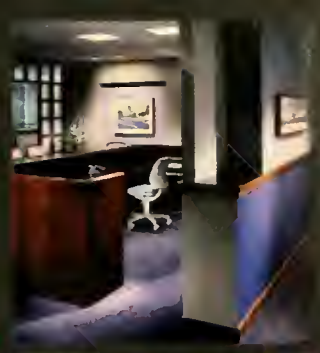




PLACES FOR WORK

The corporate and commercial facilities Sasaki Associates designs create an attractive and efficient working environment, represent a sound investment, and demonstrate sensitivity to both natural and man-made surroundings. We make a particular effort to assure that public life is enhanced through lively uses at street level.

Occupying an important corner in downtown Portland, Maine, *One Portland Square* was designed to complement the city's traditional seaport mercantile architecture. The bold entry arch, flanked by arcades, offers pedestrian scale to the street and leads to an elegant rotunda finished in mahogany, granite, and polished brass detailing. The ten-story office building fronts on Lobsterman's Park, which the firm designed twenty years ago, and helps reconnect the commercial district and the waterfront. Development of an urban design plan for the five-block area preceded site and architectural services.



Now under construction, *Charleston Waterfront Park* in South Carolina features a tree-lined promenade, sweeping lawn, formal gardens, and fishing pier, enabling residents to enjoy the city's historic Cooper River.

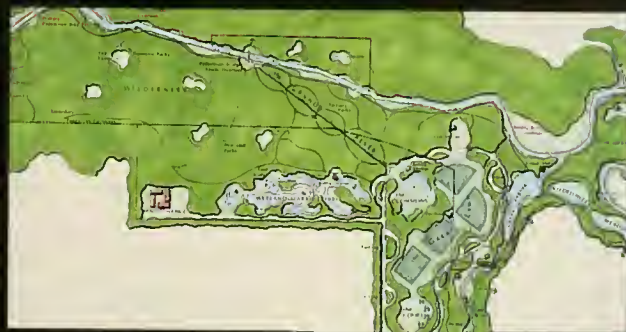
Public Square, at the heart of downtown Cleveland, is an historic open space and a busy transit crossroads. An integrated system of planting, lighting, graphics, and street furnishings unifies the four distinctive quadrants of the 10-acre square.

Opening access to the Tennessee River, the 15-acre *Chattanooga Riverfront Park* provides a promenade and boat landing along the water's edge. It also features an amphitheater and large open meadow for community events, and a more intimate botanical and sculpture area, to complement a dramatic new aquarium.

The master plan and landscape architectural design for *Trinity River Linear Park*, which traverses the city of Arlington, Texas, details zones for sports facilities and play areas, quieter activities such as picnicking and nature study, and wilderness preservation areas.

Radisson Exposition Center at Miami International Airport was enlarged to provide attractive exhibit halls, banquet facilities, and support spaces. A pedestrian entry plaza and other site enhancements give the complex an elegant new focus.



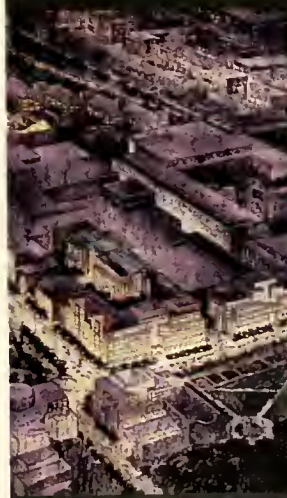


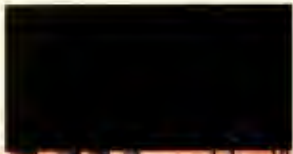


PLACES FOR WORK

The corporate and commercial facilities Sasaki Associates designs create an attractive and efficient working environment, represent a sound investment, and demonstrate sensitivity to both natural and man-made surroundings. We make a particular effort to assure that public life is enhanced through lively uses at street level.

Occupying an important corner in downtown Portland, Maine, *One Portland Square* was designed to complement the city's traditional seaport mercantile architecture. The bold entry arch, flanked by arcades, offers pedestrian scale to the street and leads to an elegant rotunda finished in mahogany, granite, and polished brass detailing. The ten-story office building fronts on Lobsterman's Park, which the firm designed twenty years ago, and helps reconnect the commercial district and the waterfront. Development of an urban design plan for the five-block area preceded site and architectural services.





The professional and personal development of our staff, and their effectiveness in working with clients, is enhanced through activities such as weekly design forums, product seminars, training sessions on subjects from public speaking to graphic presentation techniques, and a corporate wellness program.



PEOPLE

Sasaki Associates' single most important resource is its people. Talented individuals bring to each project an enthusiasm and a desire for excellence that distinguishes our work.

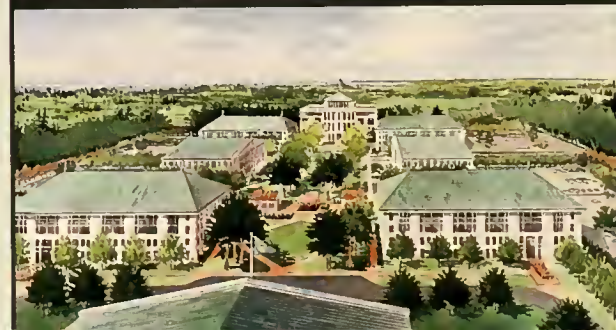
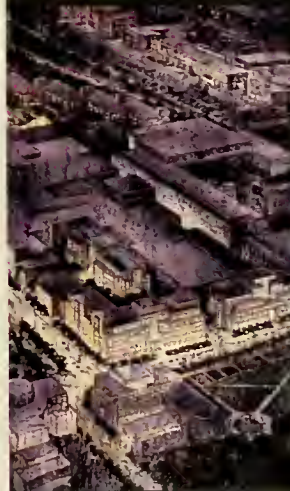
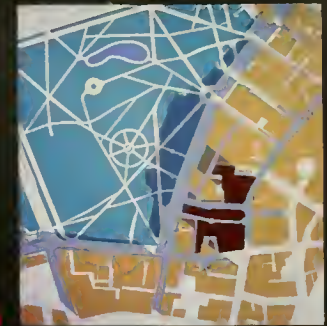


We are committed to personal growth and individual well-being. Exceptional planning and design professionals are drawn to our practice by the knowledge



that we provide a challenging yet supportive environment. Learning is an ongoing process and the diversity of work provides limitless creative opportunities.

Our commitment to people extends to the personal service we provide our clients and the value we place on the individuals who will ultimately use our projects. This philosophy shapes our work to create places that fulfill the client's vision and enrich their environment.





1 The courtyard of *American Airlines'* operations facility in Fort Worth, Texas provides employees with an informal dining area and a sheltered walkway between the building and the adjacent garage.



2 The interior design for *The Putnam Companies'* Investor Services Training Center in Quincy, Massachusetts integrates extensive technology into a warm, professional working environment.

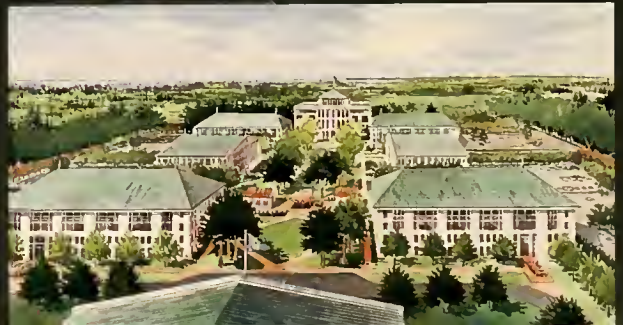
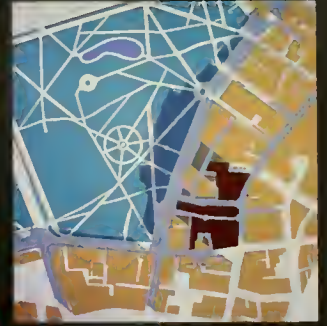
3 *The Commonwealth Center* environmental impact report has involved extensive use of computers in shadow studies for a development site facing Boston Common.

4 Signage for *The Meadows* in Framingham, Massachusetts reflects the high quality of the six-story office complex, which Sasaki Associates also designed.

5 At *Westwood Executive Center*, developed by Prudential Insurance Company near Boston, traffic and environmental issues had to be resolved before architectural and site design could begin.

6 The *Crown Center* master plan proposes a first-class office, housing, and commercial development on a 42-acre site to complement the adjacent Hallmark Card Company headquarters complex.

7 At *St. James Place* in Scarborough, Maine, eight office buildings incorporating collegiate architectural idioms front on a [five-acre] landscaped terrace where employees can enjoy the wooded setting.





Sasaki Associates' housing and resort developments convey a strong sense of individual design expression balanced with a coherent overall identity. Our approach to site design fits the project comfortably to the land, while architectural solutions acknowledge the value of regional building traditions.

The forty condominiums at *Atlantic House* are sited around a broad lawn that leads to a magnificent sandy beach. Clustered to resemble rambling, late-Victorian summer homes, the shingled dwellings reflect the architectural character of coastal Maine, with generous porches, numerous bays, and articulated roof lines. The central building recalls the grandeur of the original Atlantic House Hotel, which occupied the property for over a century. In addition to providing architectural and site design services, we were instrumental in obtaining planning and zoning approvals.





The plan for the community at *Wentworth-by-the-Sea* in New Hampshire recreates the scale and intimacy of a New England coastal village, with houses placed close to the sidewalk and streets oriented toward water views.

Interior design services for the *Samoset Village* motel units in Rockland, Maine followed the firm's master planning for the 220-acre resort and design of 112 luxury condominiums.

The Gables in Fitchburg, Massachusetts includes 45 units of congregate housing for senior citizens, plus communal dining and living rooms, convenience shop, post office, health club, clinic, and staff offices.

The focus building for a growing Cape Cod resort community, *The Clubhouse at Ocean Edge* provides a bar/lounge, dining room, pro shop, and locker and exercise facilities in a structure that reflects the vernacular architecture of the surrounding homes.

The challenge in planning *Brambleton* was to create a fresh vision for suburban development on a 2,900-acre rural site near Washington, DC. A traditional town grid of streets and public spaces sets the framework for this new community of 12,000 residents.

In Connecticut's largest historic rehabilitation project, the buildings of *Bigelow Commons* in Enfield are being converted from carpet mills to housing, offices, health and recreational facilities, and light industrial uses.

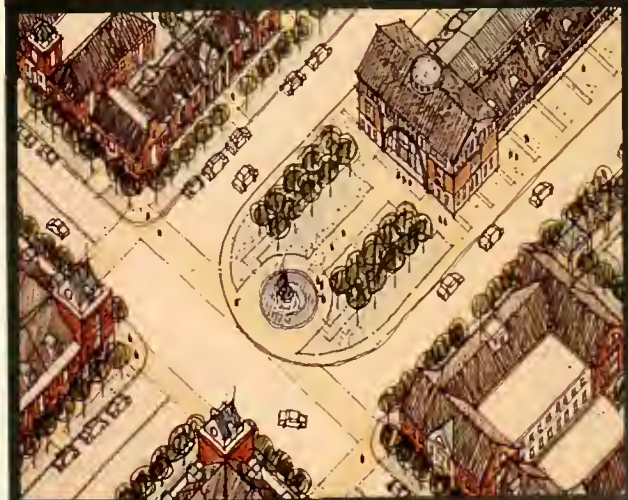




MIXED-USE PLACES

Through innovative urban design, Sasaki Associates is shaping new suburban mixed-use environments that incorporate a much needed human scale and sense of community. These plans draw on the historic precedents of main streets and public squares to establish a development framework that provides the focus and distinctive identity of a traditional American town.

At *Princeton Forrestal Village*, our urban designers and landscape architects created a master plan and site design in which the streets and open spaces make a lively setting for specialty shops, restaurants, a hotel, and professional offices. Three streets in a triangular pattern converge on a landmark Town Square that is fronted by the hotel and edged with retail uses. A two-block Main Street leads to a food pavilion and market plaza. The Village serves neighboring communities as well as office and research staff at the nearby Forrestal Center.





102

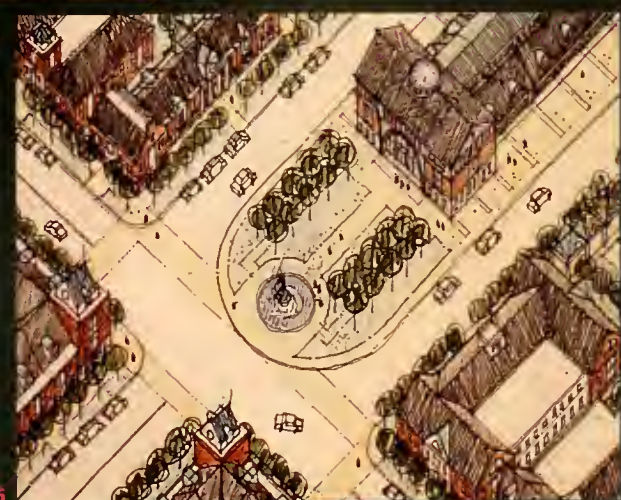
Serving residents of *The Landings*, a resort community on Skidaway Island, Georgia that Sasaki Associates planned twenty years ago, the new *Village Center* houses shops and offices in richly detailed structures placed around a paved central plaza.



The landscape architectural design for *Reston Town Center* in Virginia envisions a vital, pedestrian-oriented place that contrasts with the surrounding suburban landscape.

The master plan for *Somerset Square* in Glastonbury, Connecticut draws upon a traditional campus plan of boulevards, open quadrangles, and formal vistas to accommodate high-quality office space, a hotel and conference center, and retail shops.

As defined in our urban design and landscape architectural master plan, the town center for the new community of *The Cascades* in Loudoun County, Virginia is organized on a traditional urban grid, with a farmers' market providing the central focus.



Corporate Events

Sasaki Associates has formed an affiliation with Suter + Suter, an 800-person architecture and engineering firm based in Basel, Switzerland that serves clients in banking, health care, tourism, and manufacturing. Under the agreement reached in May, the two firms have joined forces to create an international organization that is well placed to take advantage of a wide range of opportunities in North America, Europe, the Middle East, and the Pacific region.

In December we opened a new office in Washington, DC. The office integrates architectural, interior design, and structural engineering professionals from VVKR Inc., Suter + Suter's American subsidiary, to offer comprehensive planning and design services to clients in the mid-Atlantic region.

During the year we also opened two smaller, project-related offices. John Drcutt, Principal, is directing an office in Portland, Maine and Michael Smiley, also a Principal, is heading an office in San Francisco.

Staff Achievements

Four new Principals were elected to Sasaki Associates Architects. **1** John Benson and **2** Alan Resnick are playing key roles in the new Washington office. Alan was previously a principal at VVKR Inc. John joined our Water-town office in 1981 and has been in practice for 16 years. **3** Martha Lampkin, who is both a planner and an architect, has focused on urban and institutional projects at Sasaki Associates. **4** John Hollywood, a civil engineer, has more than 15 years' experience in implementing complex site design.

5 At the second annual Sasaki Associates Recognition Awards, the Principals honored John Coons, David Mittelstadt, Barbara Eldredge (in photo), and Edith Calzadilla for 10 years of service to the firm.

Nancy Armstrong has been elected secretary of the Dallas chapter of the American Society of Landscape Architects.

Awards

6 The Pennsylvania Avenue Development Plan is one of ten winners of a Presidential Award for Design Excellence honoring projects undertaken by Federal agencies. Sasaki Associates was landscape architectural consultant. The Charleston, SC parking garages received a Federal Design Achievement Award in the same program.

7 Western Wyoming College received a 1988 Boston Exports Award from the Boston Society of Architects and a 1988 Honor Award from the Western States Regional Awards Program, American Institute of Architects.

Edith Stein Hall at the College of the Holy Cross won a Special Mention Award from the New England Regional Council of the AIA.

Nashville Riverfront Park received a Design Award from the U.S. Army Corps of Engineers.

Our client Toombs Development Company received an award for Princeton Forrestal Village from *National Mall Monitor*.

8 The marketing brochure for 75 State Street in Boston was cited by the Society for Typographic Arts as one of the best 100 graphic design projects in the nation.

The Parks and Open Space Master Plan for the City of Arlington was named "Texas Planning Project of the Year" by the Texas chapter of the American Planning Association.

The Bigelow Commons marketing brochure won a Silver Award in the National Marketing Awards program of the Institute of Residential Marketing.

The logo for Bigelow Commons received a Distinctive Merit Award from the Creative Club of Boston.

Endicott Village at Ocean Edge won a Gold Award in the 1988 Prism Awards for building design conducted by the Sales and Marketing Council of the Builders Association of Greater Boston.

Professional Activities

Stuart Dawson chaired the 1988 Excellence on the Waterfront Awards program of the Waterfront Center.

Kenneth DeMay has been appointed to the Board of Directors of the AIA.

Dick Galehouse is serving as a professional reviewer for the Urban Land Institute's research on the suburban activity centers of Tysons Corner, VA and Bethesda, MD. He was also a member of the manuscript review committee for *Designing the Successful Downtown*, published by ULI in September.

Martha Lampkin has been named to the National AIA Urban Design Committee and has been elected to the Board of Directors of the Boston Society of Architects.

Alan Fujimori served on the jury for the 1988 Texas ASLA Awards program.

Conferences and Presentations

Perry Chapman led a seminar on facilities planning at the annual conference of the National Association of College and University Business Officers.

Steve Hamwey gave the opening lecture for the Sasaki exhibit, "Thirty Years of Design on the Land," at the University of Texas at Arlington.

Joe Hibbard made two presentations on the firm's campus planning and landscape design at the annual meeting of Big Ten landscape architects.

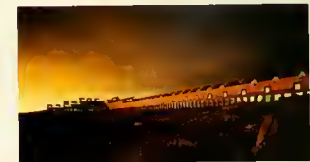
Dan Kenney addressed "The Role of Planning and Design in Positioning Downtown Housing" at the International Downtown Association annual conference.

David Mittelstadt spoke on "Planning and Design in Support of Fundraising" at the University Garden symposium of the American Association of Botanical Gardens and Arboreta.

Ralph Wolfe discussed emerging trends and technologies in athletic facilities design at the 1988 meeting of the Southeastern Regional Association of Physical Plant Administrators of Universities and Colleges.



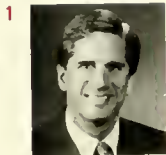
6



7



8



5

Completed

- Ashley Ridge Housing, Fitchburg, MA
- Atlantic Avenue Streetscape, Delray Beach, FL
- Batterymarch Park Signage, Quincy, MA
- Bigelow Commons Identity, Brochure, Signage, Enfield, CT
- Bluegrass Lakes DRI, Miremar, FL
- Brentwood Place Mixed-Use Development Plan, St. Louis, MO
- Bristol-Myers Courtyard, Evansville, IN
- Brown University Stadium Graphics, Providence, RI
- Cleveland Downtown Master Plan, Cleveland, OH
- Cleveland Waterfront Master Plan, Cleveland, OH
- Club West Residential Master Plan, Jade County, FL
- College of the Holy Cross, Alumni and Carlin Hall Dormitory Renovations, Worcester, MA
- Crown Colony Master Plan, Quincy, MA
- Fuller House Congregate Housing, Planning and Schematic Design, Milton, MA
- Graham Residential Master Plan, Jade County, FL
- Harborview Mixed-Use Development Master Plan, Baltimore, MD
- Kaman/EML Headquarters, Hudson, MA
- Kingston-Bedford/Parcel 16 EIR, Boston, MA
- Levi Sculpture Garden, Baltimore Museum of Art, Baltimore, MD
- Merchants Row Retail Brochure, Boston, MA
- Metco Center II Master Plan, Stamford, CT
- Northern Illinois University Master Plan, DeKalb, IL
- Ontario/East 9th Street Mixed-Use Master Plan, Cleveland, OH
- Rustin Town Center Urban Design Plan, Ruston, VA
- St. James Place Identity and Marketing Campaign, Scarborough, ME

- Southwind Retail/PGA Clubhouse and Landscape, Memphis, TN
- Stage Neck Inn Expansion, York Harbor, ME
- Taiwan Research Park Master Plan, Republic of Taiwan
- University of the South Athletic Facilities Assessment, Seawasee, TN
- Villages of Moraland Green, Worcester, MA
- Vineyards Clubhouse, Naples, FL
- Wheaton College Master Plan, Norton, MA
- Windward Town Center Master Plan, Atlanta, GA

In Construction

- Alpert's Furniture Showroom and Warehouse Renovation, Seekonk, MA
- Arizona State University Library, Tempe, AZ
- Back Bay Tower Housing, Portland, ME
- Bay Colony Corporate Center, Phase 3, Waltham, MA
- Betty Marcus Park, Dallas, TX
- Cypress Park Recreation Complex, Coral Springs, FL
- Cypress Park West Preserve Restoration, Fort Lauderdale, FL
- Dallas Arts District Streetscape, Phase 2, Dallas, TX
- Falmouth Academy New Campus, Falmouth, MA
- Florida International University Sponsored Research Office Building, Miami, FL
- Hallbrook Farms, Leawood, KS
- Harborpointe Mixed-Use Development, Newport, RI
- Highland Landmark Office Park, Downers Grove, IL
- Hnhart and William Smith Colleges Field House, Geneva, NY
- Jackie Gleason Theater of the Performing Arts, Miami Beach, FL
- Kingsway Clubhouse, Yarmouth, MA
- Long Wharf, Phase 1A, Boston, MA
- Metropolitan Corporate Center, Marlborough, MA

- Municipal Parking Garage and Retail Space, Northampton, MA
- Orlando Centroplex Plaza, Orlando, FL
- PGA/Tournament Players Club Clubhouse, Charlotte, NC
- Raynham Woods Commerce Center, Raynham, MA
- Tamiami Airport Operations Facility, Dade County, FL
- Villages of Homestead, Homestead, FL

In Planning/Design

- American College of Tasting Master Plan, Iowa City, IA
- Artists Square, Dallas, TX
- Aviation Collection Executive Terminal, Dade County, FL
- Bank of Boston Interiors, Suburban Boston, MA
- Boca Downtown Streetscape, Boca Raton, FL
- Boston Science Center HIR/EIR, Boston, MA
- Brandeis University Sports and Recreation Center, Waltham, MA
- Bridgewater State College Dormitories, Bridgewater, MA
- Broward Boulevard Corridor Study, Broward County, FL
- Brown University/Mount Hope Land Study, Bristol, RI
- Dryant College Athletic Facility, Smithfield, RI
- Castlamsine at Milton Congregate Housing, Milton, MA
- Ciga Hotel Site Improvements, Florence, Milan and Venice, Italy
- Clemson University Central Campus Landscape, Clemson, SC
- College of the Holy Cross, Fenwick and O'Keefe Hall Renovations, Worcester, MA
- Collier Medical Office Building, Naples, FL
- Cardigan Park Redevelopment Plan, Plymouth, MA
- Cornell University Housing and Campus Master Plan, Ithaca, NY
- Drivington Riverfront Park, Drivington, KY

- Eliot Hill Housing, Natick, MA
- Embry-Riddle Aeronautical University Master Plan, Prescott, AZ
- Exeter School Facilities Development Program, Exeter, NH
- Fairview Hill Congregate Housing, Newton, MA
- Five C's of Aruba, Aruba, Netherlands Antilles
- Ford Motor Company World Headquarters Site Improvements, Dearborn, MI
- Fountain Plaza, Buffalo, NY
- Harvard University/Allston Master Plan, Boston, MA
- Himart Development Co./Reading Executive Park, Phase I, Reading, MA
- Himart Development Co./Tyson's Corner, Phase II, Fairfax County, VA
- James Madison University Recreation Facilities Master Plan, Harrisonburg, VA
- Joint Services Armory, Bangor International Airport, ME
- Kittery Retail Complex, Kittery, ME
- Market Square Plaza, Manchester, NH
- Massachusetts State Track Facility, Boston, MA
- Merrimack College Engineering and Science Building, North Andover, MA
- Milford Condominiums, Milford, MA
- Mitsui Resort Master Plan, Yamaneishi, Japan
- Mount Dora Golf Community, Mount Dora, FL
- Municipal Parking Garage, Ann Arbor, MI
- North Carolina State University Athletic Facilities Master Plan, Raleigh, NC
- Northern Arizona University Library, Flagstaff, AZ
- Northpoint Development Master Plan, Cambridge, MA
- Opa Locka Airport Landscape, Opa Locka, FL
- Osaka Aquarium Site Design, Osaka, Japan
- Palmer's Cove DEIR, New Bedford, MA



Persic Air Force Base Fitness Center, Newington, NH

Plymouth Public Library, Plymouth, MA

Puerto Rico Olympic Village Site Selection Study, PR

Rhodes College Athletic Facility, Memphis, TN

Richmond Townhome Housing Study, Richmond, VA

Hiddle Farm Development, Ocean City, MD

Ridge Course at Holly Ridge Clubhouse, Sandwich, MA

Riss Lake Landscape Master Plan, Kansas City, MO

River Inn and Yacht Basin, Stratford, CT

Riverview Place Development Plan, Providence, RI

St. Paul's School Track and Field, Concord, NH

Scranton River Peninsula Re-development Plan, Cleveland, OH

Southland West Plaza, Dallas, TX

Suter + Suter Office Building, Zurich, Switzerland

Turtle Run Resort Community Site Design, St. Croix, U.S. Virgin Islands

University Park Community Master Plan, University Park, TX

University of Pittsburgh Oakland Campus Master Plan, Pittsburgh, PA

University of Virginia Facilities Master Plan, Charlottesville, VA

Vanderbilt University Engineering Center, Nashville, TN

Village Green at Bedford, Bedford, NH

Westbrook College Recreation Center, Portland, ME

Westover Airpark, Chicopee, MA

Wheaton College Athletic Facility, Norton, MA

Woolwich Township Long-Range Land Use Plan, Woolwich, NJ

Yale University Parking Garage, New Haven, CT



12



13



14

Professional Credits

- Page 1: Alan Weiss, Bruce Armstrong, Felice Gaudin, Peter Aaron Cole
- Page 2: Bruce Armstrong
- Page 3: Steve Rosenblatt
- Page 4: Steve Rosenblatt, Bob Froyd
- Page 5: Tom Bart
- Page 6: Armp 4, Steve Rosenblatt, Tom Bart
- Page 8: Steve Rosenblatt
- Greenwood Day Results
- Page 9: Bob Armstrong, David Smith
- Page 9: Peter Yoshimura
- Page 9: Bob Armstrong, Lisa Gandy, Peter Yoshimura
- Page 10: Peter Aaron Cole
- Page 11: David Smith
- Page 12: Alan Weiss, Mike Stacey
- Washburn Center, Sam Swartz, Peter Joseph



Corporate Events

Sasaki Associates has formed an affiliation with Suter + Suter, an 800-person architecture and engineering firm based in Basel, Switzerland that serves clients in banking, health care, tourism, and manufacturing. Under the agreement reached in May, the two firms have joined forces to create an international organization that is well placed to take advantage of a wide range of opportunities in North America, Europe, the Middle East, and the Pacific region.

In December we opened a new office in Washington, DC. The office integrates architectural, interior design, and structural engineering professionals from VVKB Inc.,

Suter + Suter's American subsidiary, to offer comprehensive planning and design services to clients in the mid-Atlantic region.

During the year we also opened two smaller, project-related offices. John Drutt, Principal, is directing an office in Portland, Maine and Michael Smiley, also a Principal, is heading an office in San Francisco.

Staff Achievements

Four new Principals were elected to Sasaki Associates Architects. **1** John Benson and **2** Alan Resnick are playing key roles in the new Washington office. Alan was previously a principal at VVKB Inc. John joined our Water-town office in 1981 and has been in practice for 16 years. **3** Martha Lampkin, who is both a planner and an architect, has focused on urban and institutional projects at Sasaki Associates. **4** John Hollywood, a civil engineer, has more than 15 years' experience in implementing complex site design.

5 At the second annual Sasaki Associates Recognition Awards, the Principals honored John Coons, David Mittelstadt, Barbara Eldredge (in photo), and Edith Calzadilla for 10 years of service to the firm.

Nancy Armstrong has been elected secretary of the Dallas chapter of the American Society of Landscape Architects.

Awards

6 The Pennsylvania Avenue Development Plan is one of ten winners of a Presidential Award for Design Excellence honoring projects undertaken by Federal agencies. Sasaki Associates was landscape architectural consultant. The Charleston, SC parking garages received a Federal Design Achievement Award in the same program.

7 Western Wyoming College received a 1988 Boston Exports Award from the Boston Society of Architects and a 1988 Honor Award from the Western States Regional Awards Program, American Institute of Architects.

Edith Stein Hall at the College of the Holy Cross won a Special Mention Award from the New England Regional Council of the AIA.

Nashville Riverfront Park received a Design Award from the U.S. Army Corps of Engineers.

Our client Toombs Development Company received an award for Princeton Forrestal Village from *National Mall Monitor*.

8 The marketing brochure for 75 State Street in Boston was cited by the Society for Typographic Arts as one of the best 100 graphic design projects in the nation.

The Parks and Open Space Master Plan for the City of Arlington was named "Texas Planning Project of the Year" by the Texas chapter of the American Planning Association.

The Bigelow Commons marketing brochure won a Silver Award in the National Marketing Awards program of the Institute of Residential Marketing.

The logo for Bigelow Commons received a Distinctive Merit Award from the Creative Club of Boston.

Endicott Village at Ocean Edge won a Gold Award in the 1988 Prism Awards for building design conducted by the Sales and Marketing Council of the Builders Association of Greater Boston.

Professional Activities

Stuart Dawson chaired the 1988 Excellence on the Waterfront Awards program of the Waterfront Center.

Kenneth DeMay has been appointed to the Board of Directors of the AIA.

Dick Galehouse is serving as a professional reviewer for the Urban Land Institute's research on the suburban activity centers of Tysons Corner, VA and Bethesda, MD. He was also a member of the manuscript review committee for *Designing the Successful Downtown*, published by ULI in September.

Martha Lampkin has been named to the National AIA Urban Design Committee and has been elected to the Board of Directors of the Boston Society of Architects.

Alan Fujimori served on the jury for the 1988 Texas ASLA Awards program.

Conferences and Presentations

Perry Chapman led a seminar on facilities planning at the annual conference of the National Association of College and University Business Officers.

Steve Hamwey gave the opening lecture for the Sasaki exhibit, "Thirty Years of Design on the Land," at the University of Texas at Arlington.

Joe Hibbard made two presentations on the firm's campus planning and landscape design at the annual meeting of Big Ten landscape architects.

Dan Kenney addressed "The Role of Planning and Design in Positioning Downtown Housing" at the International Downtown Association annual conference.

David Mittelstadt spoke on "Planning and Design in Support of Fundraising" at the University Garden symposium of the American Association of Botanical Gardens and Arboreta.

Ralph Wolfe discussed emerging trends and technologies in athletic facilities design at the 1988 meeting of the Southeastern Regional Association of Physical Plant Administrators of Universities and Colleges.



6



7



8



4



5

Completed

- Ashley Ridge Housing, Fitchburg, MA
- Atlantic Avenue Streetscape, Delray Beach, FL
- Batturymarch Park Signage, Quincy, MA
- Bigelow Commons Identity, Brochure, Signage, Enfield, CT
- Bluegrass Lakes DRI, Miramar, FL
- Brentwood Place Mixed-Use Development Plan, St. Louis, MO
- Bristol-Myers Courtyard, Evansville, IN
- Brown University Stadium Graphics, Providence, RI
- Cleveland Downtown Master Plan, Cleveland, OH
- Cleveland Waterfront Master Plan, Cleveland, OH
- Clut West Residential Master Plan, Dade County, FL
- College of the Holy Cross, Alumni and Carlin Hall Dormitory Renovations, Worcester, MA
- Crown Colony Master Plan, Quincy, MA
- Fuller House Congregate Housing, Planning and Schematic Design, Milton, MA
- Graham Residential Master Plan, Dade County, FL
- Harborview Mixed-Use Development Master Plan, Baltimore, MD
- Kaman/EML Headquarters, Hudson, MA
- Kingston-Berford/Farcel 17 EIR, Boston, MA
- Levi Sculpture Garden, Baltimore Museum of Art, Baltimore, MD
- Merchants Row Retail Brochure, Boston, MA
- Metro Center II Master Plan, Stamford, CT
- Northern Illinois University Master Plan, DeKalb, IL
- Pintaria/East 5th Street Mixed-Use Master Plan, Cleveland, OH
- Ruston Town Center Urban Design Plan, Reston, VA
- St. James Place Identity and Marketing Campaign, Scarborough, ME

Principals

- Kenneth E. Bassett**
- John R. Benson**
- Edward B. Boiteau**
- M. Perry Chapman**

57 Pleasant Street
Worcester, Massachusetts 01112
617-855-1300

4400 Bruce Dr. Land Management
Dade County, Florida 33146
305-463-1344

305 2nd Avenue
New York, NY 10001

WATERFRONT
S252
1989

AUTHOR

PERSPECTIVES '89
TITLE **SASAKI ASSOCIATES**

DATE LOANED

BORROWER'S NAME

DATE LOANED	BORROWER'S NAME

Richard H. Rogers

Michael Smiley

Nelson Scott Smith

Norris Strawbridge

James A. Sukeforth

Roy V. Viklund

Donald C. Vitters

Alan L. Ward

Larry R. Young



